



[about](#)

[programs](#)

[working together](#)

[donate](#)

No one should feel like they are the only one.



Our Vision

A world where children and youth of all sexual orientations and gender identities live authentic lives.

Our Mission

To foster Awareness, Respect and Capacity through SOGI-inclusive K-12 education.

Our Values

Accessible: We are approachable and responsive, making ourselves and our resources available with as few barriers as possible. We are open to dialogue and seek to understand multiple perspectives.

Adaptable: We respond thoughtfully to changing circumstances or needs and remain curious and creative in finding solutions to support educators. We approach change with a positive mindset and openness to new ideas.

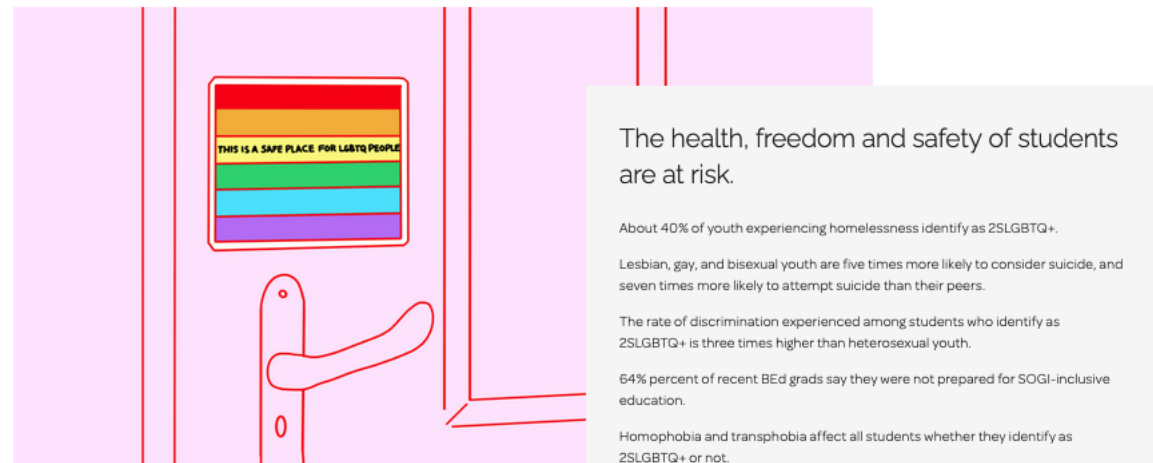
Collaboration: We believe bringing diverse perspectives together expands capacity and fosters a sense of community, and ultimately leads to better outcomes. Simply put, it's more equitable when we work together.

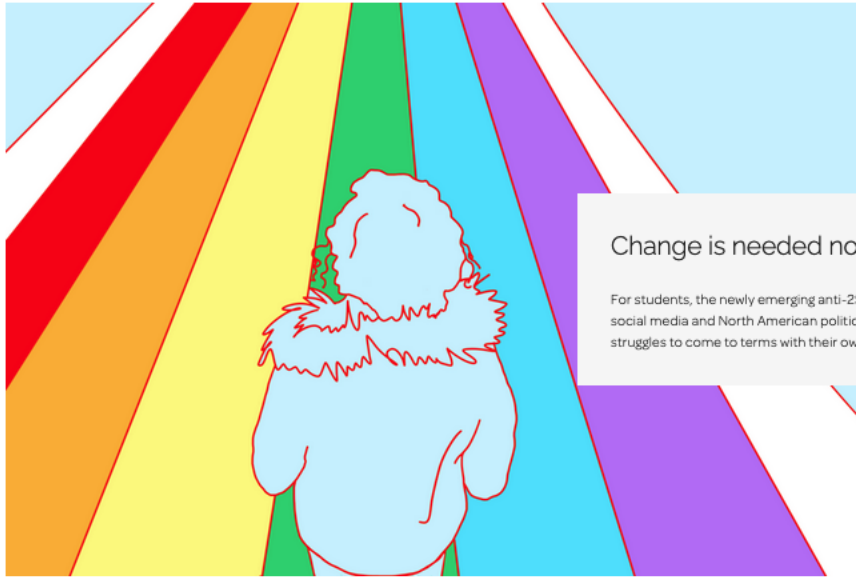
Empathy: We value empathy in all our interactions; listening with compassion and open minds to be inclusive of all perspectives in seeking authenticity, respect and well-being for all.

Integrity: We are guided by acting honestly, transparently and professionally to be trustworthy and accountable to our stakeholders, our partners, and to each other. Credibility and reputation are earned; acting with integrity achieves this.

[WHY WE DO THIS WORK](#) / [OUR FOCUS](#) / [OUR APPROACH](#) / [OUR TEAM](#)

Why We Do This Work





Change is needed now as much as ever.

For students, the newly emerging anti-2SLGBTQ+ sentiment that they see in social media and North American politics only emphasizes some of their struggles to come to terms with their own sexual orientation and gender identity.

Our Focus: Schools

School might be the only place a student feels safe to be their authentic self. For youth who don't experience a sense of belonging at home, a teacher could be the one supportive adult that helps them feel valued. When a student feels connected to their school, they have a higher chance of graduating, are less likely to experience substance abuse and experience better mental health into young adulthood. ARC Foundation is committed to a long-lasting and far-reaching approach to changing the experience of youth one school at a time.



Our Approach: Systemic Collaboration

There is so much great work already being done. However, many experts are working in isolation and institutional silos, grossly limiting the potential impact we could have on students' lives. At ARC Foundation, we create and co-fund breakthrough collaboration models for bringing everyone together for accelerated and sustainable change.

WHY COLLABORATION?

- To create a common language for unprecedented conversations
- To combine expertise for greater impact and innovation
- To give leaders a collective voice and larger audience
- To create a movement for change in which newcomers feel welcome
- Because we are stronger together

Our Team



REG KRAKE, EXECUTIVE DIRECTOR (HE/IL)

Reg is an executive leader with over 20 years' experience in the for-profit and non-profit sectors and as an educator with several years of teaching experience. He has held senior leadership roles with the Vancouver Airport Authority, Tourism British Columbia (Destination BC) and Intrawest. In his early career, he worked as a French Immersion teacher with the Vancouver School Board. He is a focused, team-oriented and results driven leader that brings an unwavering passion for, and commitment to, education and inclusivity.



KIMBERLEY HOLLETT, DIRECTOR, FINANCE AND ADMINISTRATION (SHE/HER)

Kimberley is a team-oriented leader: she is driven by continuous learning, and thrives when working with others to achieve a common goal. She is passionate about helping people, making genuine connections, and hearing new perspectives. Kimberley has many years of experience working in diverse industries, as a trusted advisor and problem solver. In her role at ARC Foundation, she is responsible for developing and managing the finance, operations, and human resource strategies.



HEATHER VAUSE, DIRECTOR, COMMUNITY ENGAGEMENT (SHE/HER)

Heather is a strategic leader with multifaceted community engagement experience, who joined ARC Foundation in 2019. She is a passionate collaborator, innovator, and relationship builder. Heather is a community champion with a strong interest in creating systemic change to support students of all sexual orientations and gender identities. In her role of Director, Community Engagement, Heather leads the SOGI 123 strategy and operations, including community partnerships and communications functions, nationally for ARC Foundation.



SCOUT, NATIONAL PROGRAM MANAGER (THEY/THEM)

Scout is a non-profit manager and youth engagement specialist with a passion for community engagement and fostering positive social change. They have a background in facilitation and experiential education, and they have a deep commitment to supporting inclusive and collaborative programs. Scout is responsible for leading SOGI 123 programming nationally for ARC Foundation.



DALEY, SOGI 1 2 3 LEAD - ALBERTA (THEY/THEM)

Daley is a community facilitator, researcher, and project manager with a deep commitment to 2SLGBTQ+ inclusion and equity. Their passion lies in supporting individuals and organizations to create futures where more of us can bring more of ourselves more of the time. They value creativity and connection as tools for systems level change. Daley is responsible for leading SOGI 1 2 3 programming in Alberta.



JUSTENE, SOGI 1 2 3 LEAD - BC (THEY/THEM)

Justene is a leader in the business and non-profit sectors with a focus on supporting children and youth. As a Métis person, they are committed to decolonization, and ensuring hope, belonging, meaning and purpose is attained by all children and youth. They are passionate about using their workshop facilitation and research experience to create systems change. Justene is responsible for leading SOGI 1 2 3 programming in BC.



EMILY, FUNDRAISING & COMMUNICATIONS SPECIALIST (SHE/HER)

Emily is a communications specialist with a strong interest in creating equitable learning environments for all students. With a background in non-profit administration and sociology, she is passionate about supporting institutional social change for a more equitable world. She values teamwork, creativity, and life-long learning, which are reflected in all facets of her work. Emily is responsible for developing ARC Foundation's fundraising and communications initiatives.



CHRISTINA, ADMINISTRATIVE COORDINATOR (SHE/HER)

Christina is an administrative coordinator with a passion for social justice and advocacy. With a background in academic administration with diverse school populations, Christina prioritizes fostering an environment of acceptance and inclusivity for all people of all identities. Christina is responsible for providing administrative and logistical support to ARC Foundation staff.

OUR BOARD OF DIRECTORS

Scott Graham / Chair

Richard Wadsworth / Secretary & Treasurer

Jag Bilkhu / Director

Arleen Chuang / Director

Wayne Hartrick / Director

Mark Prior / Director

Robert Quartermain / Director

Brandi Rai / Director

OUR BOARD ADVISORS

Jill Gardiner

Douglas R. Stollery

Dee Dee Sung

Charitable Registration No. 85489 6693
RR0001

312 Main Street, 2nd Floor,
Vancouver, BC V6A 2T2,
Canada

(778) 819-2135
info@arcfoundation.ca

[Home](#)

[About](#)

[Programs](#)

[Donate](#)

[Working Together](#)